

# INSTRUMENT MOUNTING STANDS

## PRODUCT CATALOG

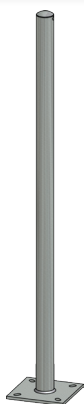
Continuous Tray Support System  
for Instrumentation and Controls

James C. White Company, Inc.  
Greenville, SC

PAGE

5

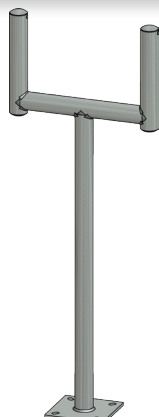
### Standard Instrument Stands



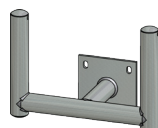
SINGLE FLOOR STAND



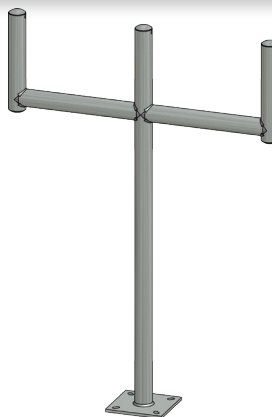
SINGLE  
WALL STAND



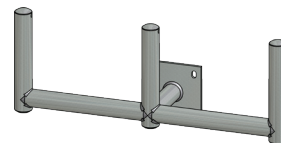
DOUBLE FLOOR STAND



DOUBLE  
WALL STAND



TRIPLE FLOOR STAND

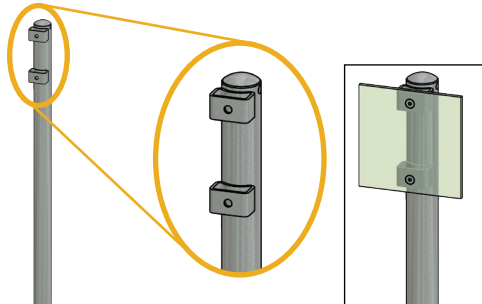


TRIPLE  
WALL STAND

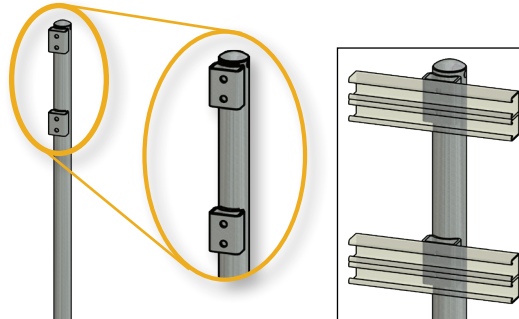
PAGE

8

### Standard Instrument Stands with Component Mounting Brackets



SINGLE FLOOR STAND WITH  
ONE-HOLE BRACKETS

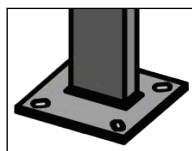
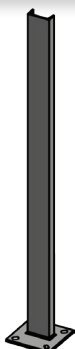


SINGLE FLOOR STAND WITH  
TWO-HOLE BRACKETS

PAGE

12

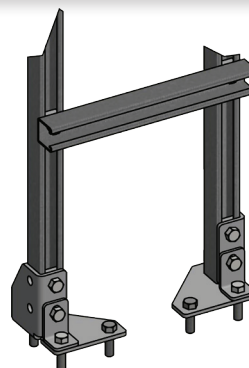
### Channel Stands



PAGE

13

### NEW Strut Stands



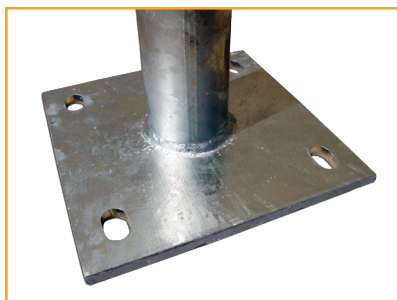


## ► About JCWCO's Instrument Mounting Stands

This catalog shows our **Standard Stands**, which allow for best pricing and stock availability. For custom specification options, see page 4.

- Made from structural tubing, nominal 2" schedule-40 pipe.
- Available in Hot-Dip Galvanized Carbon Steel, Powder Coated Carbon Steel, Aluminum, Type 304 Stainless, and Type 316 Stainless.
- Available with welded-on brackets to allow for mounting of instruments, panels, strut, etc.
- Standard stands available from stock; custom build-to-order also available to meet your specifications

### What makes our Instrument Mounting Stands Superior:



**Double-welded posts** (inside and outside) eliminate the need for gussets. **Pre-stressed bases** prevent movement and allow for firm installation.



**Unique galvanizing process** allows for hot-dip galvanizing of both inside and outside surfaces. Drain holes allow for drainage of galvanized coating and future water/condensate.



## ► About James C. White Company, Inc.

We began as a partnership in 1952 as a distributor of tube fittings and valves. Two years later Jim and Bettye White took the Company to a new level and began manufacturing TUBETRACK®, Jim White's design of the first use of a Tray Support System for instrumentation tubing. The TUBETRACK® Tray System was the first industrial category of Instrument Support Tray.

To this day we have maintained the culture of quality and attention to detail that Jim and Bettye White so deeply ingrained in our personnel. Jim White was well known for many "famous" mottoes he used to guide the company and which he passed on to the current generation of company leadership. One of those mottoes that still directs the company today is:

***"Good business is business that is good for both parties."***

Under the direction of Tom White, owner and president, we have made significant advances in new product design and manufacturing improvements in the last 10 years. James C. White Co. is a growing, innovative manufacturing company with complete fabrication and machining capabilities. Although a small business, we have served some of the world's largest EPC firms and supplied materials on time to some of the largest industrial projects in the world.

We welcome opportunities to partner with you to solve your special instrumentation support needs. Over the years we have custom machined or fabricated numerous custom items which are not catalog-standard items. If you don't find what you need in our catalogs, please contact the factory. There is a good possibility we may already have a solution or can partner with you to provide one.

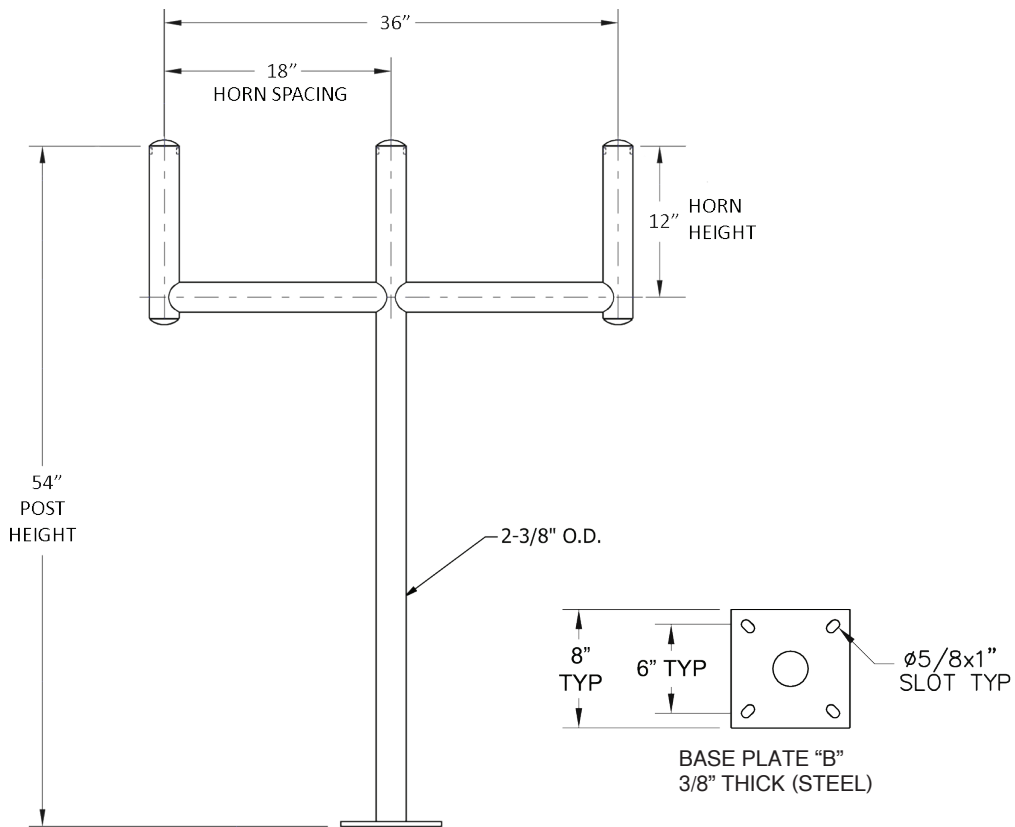
Thank you for your continued interest in the James C. White Company.



► **Part Numbering System for JCWCO Instrument Stands**

The following is information on how to read and understand the part numbers for JCWCO Instrument Mounting Stands. All part numbers are 15 characters long, and each character describes the finished stand.

This part number system works for both standard and custom-specified stands.



©2017 James C. White Co., Inc. 0925

Example Part Number : **I M F T 54 PC Y B Z 18 12**

**I** Instrument

**M** Mount

**F** TYPE: Floor, Wall

**T** CONFIGURATION: Triple, Double, Single

**54** HEIGHT (whole inches)

**PC** FINISH: Galvanized Carbon steel  
Powder Coat paint  
NA aluminum  
S4 304 stainless steel  
S6 316 stainless steel

**Y** COLOR: safety Yellow, White, Natural Finish

**B** Base plate (see page 4 for codes)

**Z** ATTACHMENTS: Z = no attachment (factory assigned code)

**18** HORN SPACING (whole inches)

**12** HORN HEIGHT (whole inches)

## Custom Specification Options

In addition to our standard stands, we regularly work with our customers on a number of specifications to meet specific job needs. The following are the most common specifications:

### 1. Dimensions

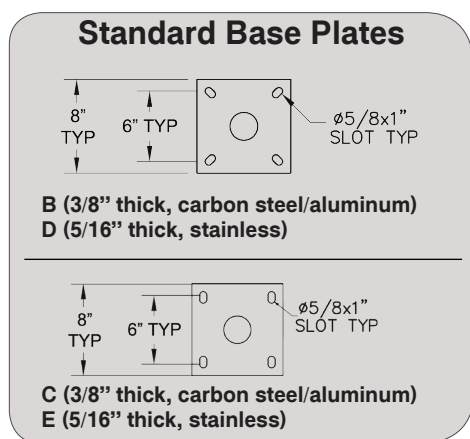
Post (overall) height, horn height, and horn spacing can be customized. Consult our Part Number System explanation (Page 3) for information on how to specify your dimensions.

### 2. Base Plates

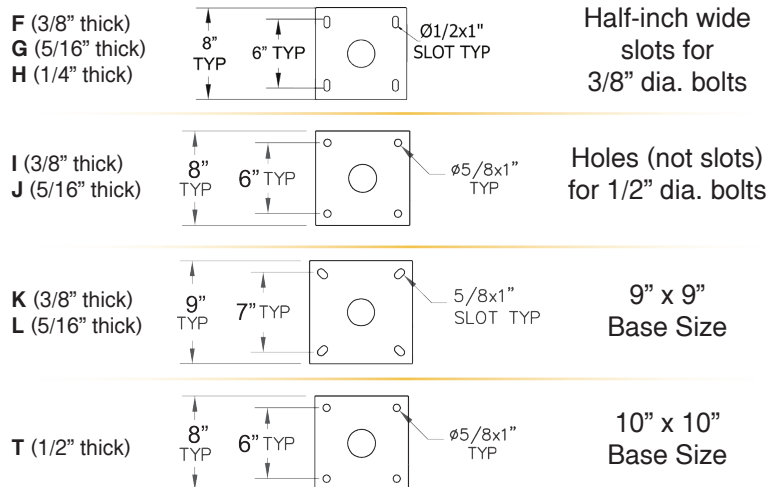
Each base plate has a corresponding one-digit part number code. If our standard bases (B, D, C, E) don't meet your needs, we offer a number of alternatives.

**I M F D 54 GC N B Z 18 12**

**L** Base Plate Part Number Code



### Custom Base Plates



Should none of these satisfy your requirements, please contact us with the details of what you need. Minimum order quantities may apply for all custom-specified base plates.

### 3. Mounting Brackets

Mounting Brackets are available on several JCWCO Standard Instrument Stands. However, if you need custom-specified brackets (number holes/brackets, locations, etc), please contact us.

### 4. Colors

The Powder Coat paint finish on our Carbon Steel Instrument Stands can be provided in several different colors. Standard colors are White and Yellow. If your job requires another color, please contact us. Minimum order quantities may apply for all stands with Powder Coat finish.

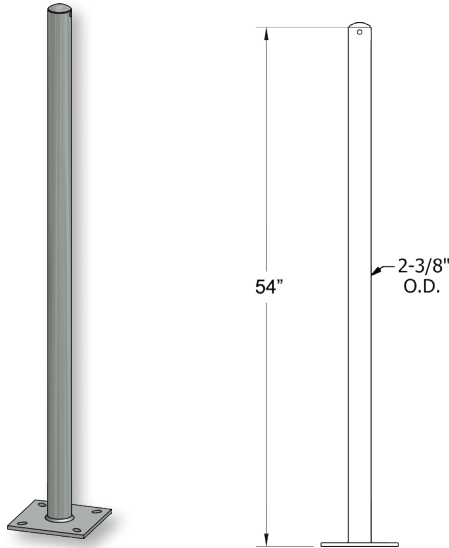
### 5. Gussets

While our unique double welding process virtually eliminates the need for additional bracing, we can provide gussets on any floor mounted stands. Please contact us for more information.



# Standard Stands

## Single Floor Mount



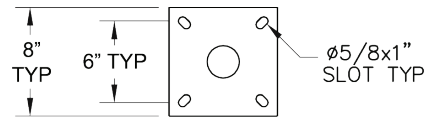
Metal	Finish	Part No.
Carbon Steel	Hot-Dip Galvanized	IMFS54GCNBZ0000
	Powder Coat Yellow	IMFS54PCYBZ0000
	Powder Coat White	IMFS54PCWBZ0000
Aluminum	Natural Finish	IMFS54NANBZ0000
304 Stainless Steel	Stainless Steel T-304	IMFS54S4NDZ0000
316 Stainless Steel	Stainless Steel T-316	IMFS54S6NDZ0000

Illustrations show our standard stands, which allow for best pricing and availability. Multiple custom specifications are available.

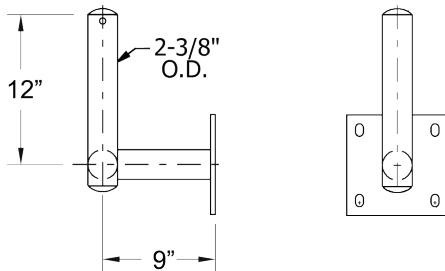
See **Custom Specification Options** section on (page 4) for options on dimensions, base plates, colors, and gussets.

See **Part Number section** (page 3) for a full explanation of the Instrument Mounting Stand part number system.

**Base "B": 3/8" thick (carbon steel/aluminum)**  
**Base "D": 5/16" thick (stainless)**



## Single Wall Mount



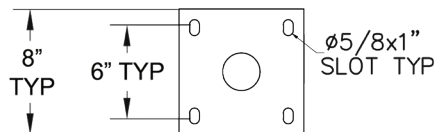
Metal	Finish	Part No.
Carbon Steel	Hot-Dip Galvanized	IMWS09GCNCZ0012
	Powder Coat Yellow	IMWS09PCYCZ0012
	Powder Coat White	IMWS09PCWCZ0012
Aluminum	Natural Finish	IMWS09NANCZ0012
304 Stainless Steel	Stainless Steel T-304	IMWS09S4NDZ0012
316 Stainless Steel	Stainless Steel T-316	IMWS09S6NDZ0012

Illustrations show our standard stands, which allow for best pricing and availability. Multiple custom specifications are available.

See **Custom Specification Options** section (page 4) for options on dimensions, base plates, colors, and gussets.

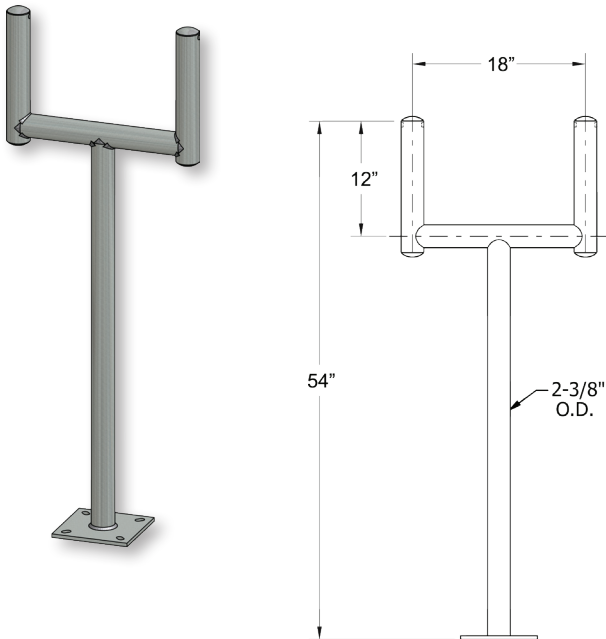
See **Part Number section** (page 3) for a full explanation of the Instrument Mounting Stand part number system.

**Base "C": 3/8" thick (carbon steel/aluminum)**  
**Base "E": 5/16" thick (stainless)**





**Double Floor Mount**



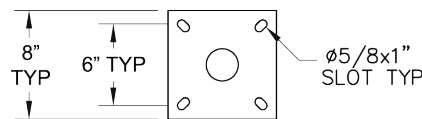
Metal	Finish	Part No.
Carbon Steel	Hot-Dip Galvanized	IMFD54GCNBZ1812
	Powder Coat Yellow	IMFD54PCYBZ1812
	Powder Coat White	IMFD54PCWBZ1812
Aluminum	Natural Finish	IMFD54NANBZ1812
304 Stainless Steel	Stainless Steel T-304	IMFD54S4NDZ1812
316 Stainless Steel	Stainless Steel T-316	IMFD54S6NDZ1812

Illustrations show our standard stands, which allow for best pricing and availability. Multiple custom specifications are available.

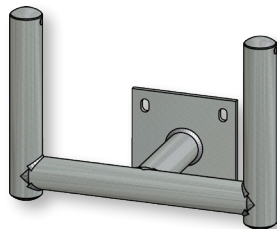
See **Custom Specification Options** section (page 4) for options on dimensions, base plates, colors, and gussets.

See **Part Number section** (page 3) for a full explanation of the Instrument Mounting Stand part number system.

**Base "B": 3/8" thick (carbon steel/aluminum)**  
**Base "D": 5/16" thick (stainless)**



**Double Wall Mount**



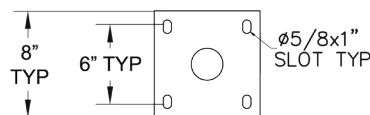
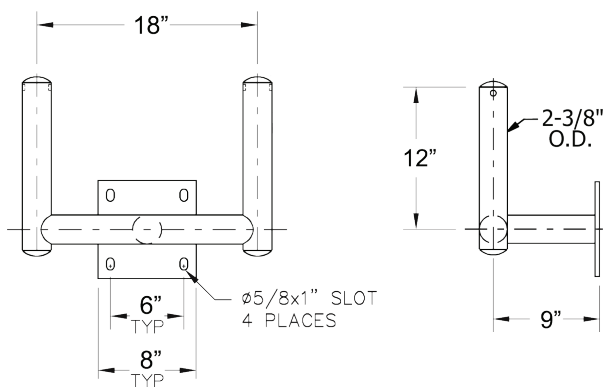
Metal	Finish	Part No.
Carbon Steel	Hot-Dip Galvanized	IMWD09GCNCZ1812
	Powder Coat Yellow	IMWD09PCYCZ1812
	Powder Coat White	IMWD09PCWCZ1812
Aluminum	Natural Finish	IMWD09NANCZ1812
304 Stainless Steel	Stainless Steel T-304	IMWD09S4NEZ1812
316 Stainless Steel	Stainless Steel T-316	IMWD09S6NEZ1812

Illustrations show our standard stands, which allow for best pricing and availability. Multiple custom specifications are available.

See **Custom Specification Options** section (page 4) for options on dimensions, base plates, colors, and gussets.

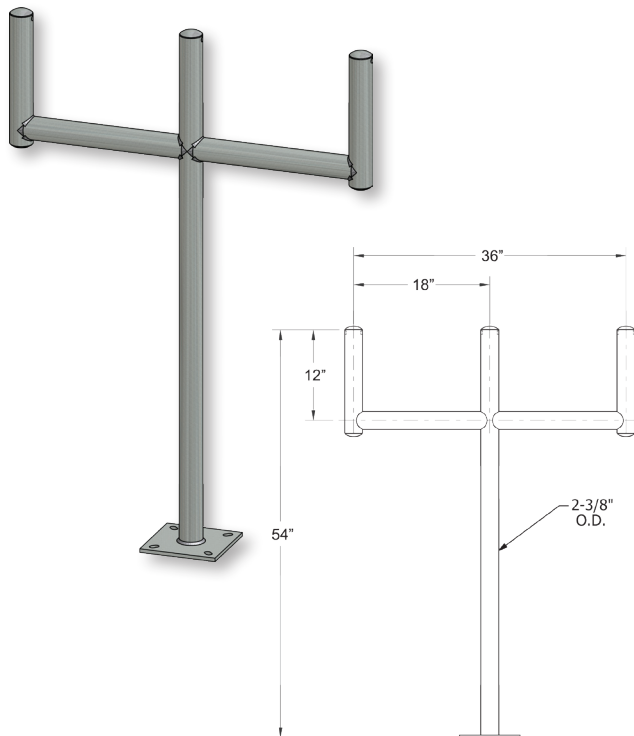
See **Part Number section** (page 3) for a full explanation of the Instrument Mounting Stand part number system.

**Base "C": 3/8" thick (carbon steel/aluminum)**  
**Base "E": 5/16" thick (stainless)**





**Triple Floor Mount**



Metal	Finish	Part No.
Carbon Steel	Hot-Dip Galvanized	IMFT54GCNBZ1812
	Powder Coat Yellow	IMFT54PCYBZ1812
	Powder Coat White	IMFT54PCWBZ1812
Aluminum	Natural Finish	IMFT54NANBZ1812
304 Stainless Steel	Stainless Steel T-304	IMFT54S4NDZ1812
316 Stainless Steel	Stainless Steel T-316	IMFT54S6NDZ1812

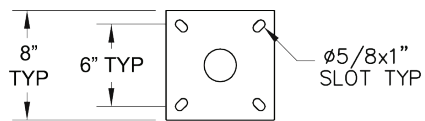
Illustrations show our standard stands, which allow for best pricing and availability. Multiple custom specifications are available.

See **Custom Specification Options** section (page 4) for options on dimensions, base plates, colors, and gussets.

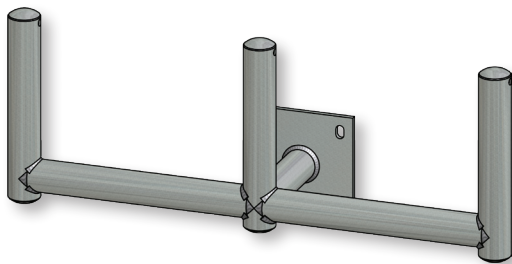
See **Part Number section** (page 3) for a full explanation of the Instrument Mounting Stand part number system.

**Base "B": 3/8" thick (carbon steel/aluminum)**

**Base "D": 5/16" thick (stainless)**



**Triple Wall Mount**



Metal	Finish	Part No.
Carbon Steel	Hot-Dip Galvanized	IMWT09GCNCZ1812
	Powder Coat Yellow	IMWT09PCYCZ1812
	Powder Coat White	IMWT09PCWCZ1812
Aluminum	Natural Finish	IMWT09NANCZ1812
304 Stainless Steel	Stainless Steel T-304	IMWT09S4NEZ1812
316 Stainless Steel	Stainless Steel T-316	IMWT09S6NEZ1812

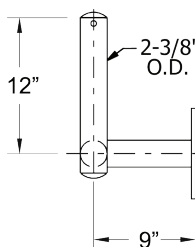
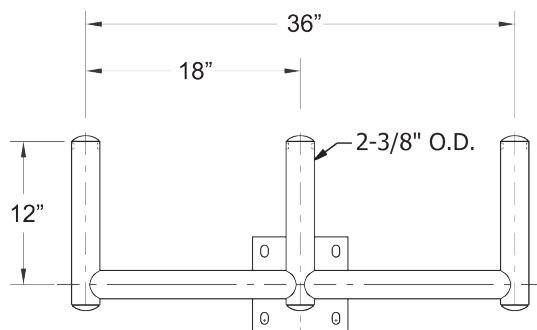
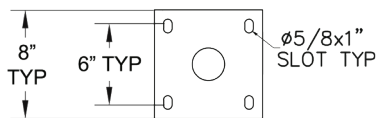
Illustrations show our standard stands, which allow for best pricing and availability. Multiple custom specifications are available.

See **Custom Specification Options** section (page 4) for options on dimensions, base plates, colors, and gussets.

See **Part Number section** (page 3) for a full explanation of the Instrument Mounting Stand part number system.

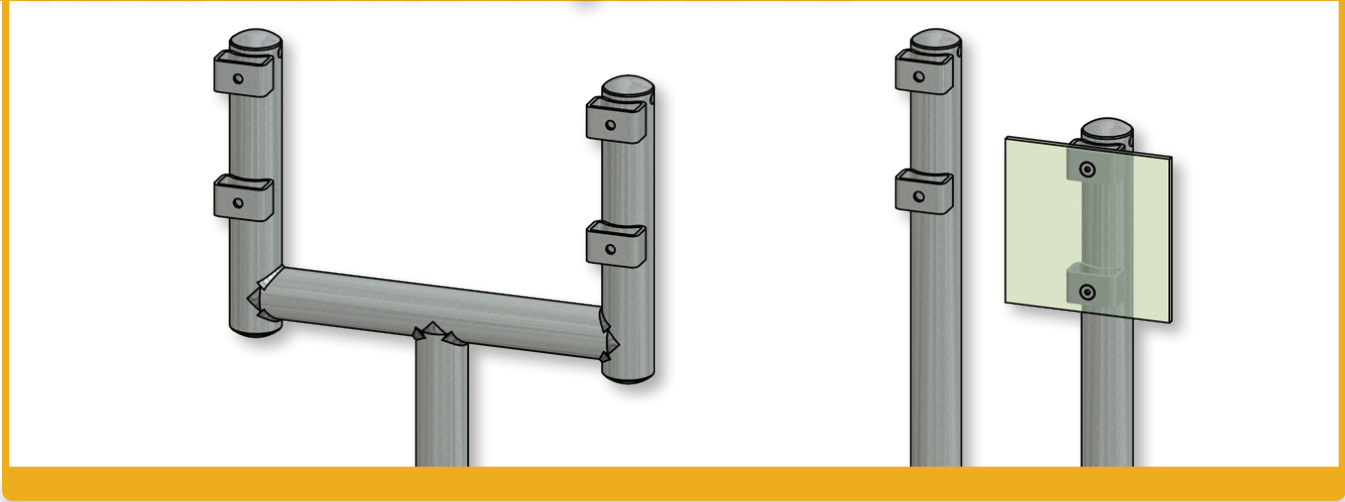
**Base "C": 3/8" thick (carbon steel/aluminum)**

**Base "E": 5/16" thick (stainless)**





# Stands with Mounting Brackets

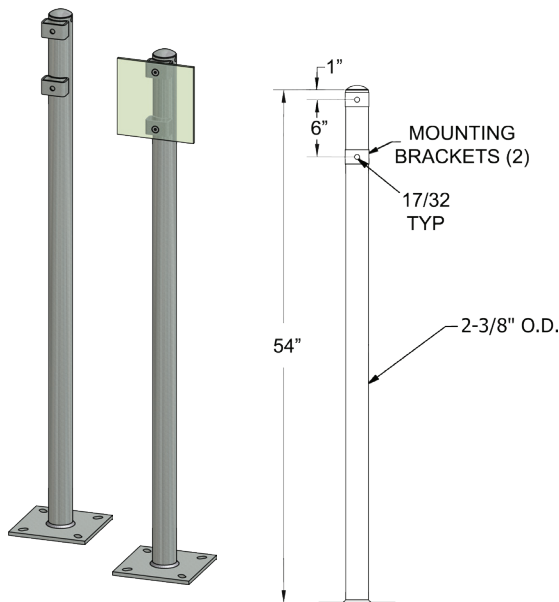


## Instrument Stands with Mounting Brackets

In addition to our standard stands, JCWCO Instrument Mounting Stands can be purchased with welded-on mounting brackets. These brackets reduce field labor and give you flexibility for mounting instrumentation.

- We offer standard one-hole and two-hole mounting brackets. Illustrations show standard placement of the brackets.
- On standard brackets, the holes are 17/32" diameter for use with 3/8" or 1/2" fasteners. We recommend using flat washers or flanged locking nuts with 3/8" fasteners.
- Fasteners and attachments (such as strut) are not included with JCWCO Instrument Stands.
- Consult the factory for any custom specifications.

## Single Floor Mount with One-Hole Brackets



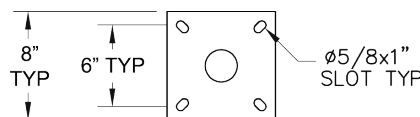
Metal	Finish	Part No.
Carbon Steel	Hot-Dip Galvanized	IMFS54GCNBC0000
	Powder Coat Yellow	IMFS54PCYBC0000
	Powder Coat White	IMFS54PCWBC0000
Aluminum	Natural Finish	IMFS54NANBC0000
304 Stainless Steel	Stainless Steel T-304	IMFS54S4NDC0000
316 Stainless Steel	Stainless Steel T-316	IMFS54S6NDC0000

Illustrations show our standard stands with brackets, which allow for best pricing and availability. Multiple custom specifications are available.

See **Custom Specification Options** section (page 4) for options on dimensions, base plates, colors, and gussets.

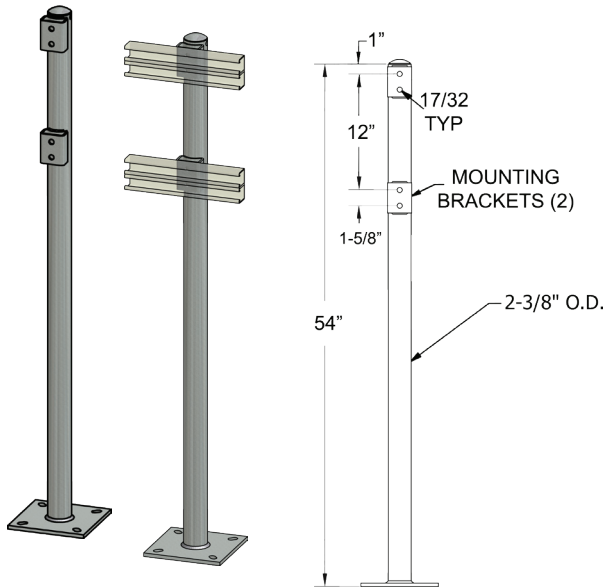
See **Part Number section** (page 3) for a full explanation of the Instrument Mounting Stand part number system.

**Base "B": 3/8" thick (carbon steel/aluminum)**  
**Base "D": 5/16" thick (stainless)**





**Single Floor Mount with Two-Hole Brackets**



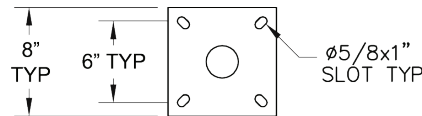
Metal	Finish	Part No.
Carbon Steel	Hot-Dip Galvanized	IMFS54GCNBP0000
	Powder Coat Yellow	IMFS54PCYBP0000
	Powder Coat White	IMFS54PCWBP0000
Aluminum	Natural Finish	IMFS54NANBP0000
304 Stainless Steel	Stainless Steel T-304	IMFS54S4NDP0000
316 Stainless Steel	Stainless Steel T-316	IMFS54S6NDP0000

Illustrations show our standard stands with brackets, which allow for best pricing and availability. Multiple custom specifications are available.

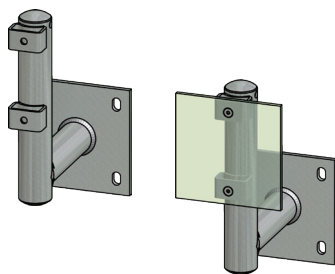
See **Custom Specification Options** section (page 4) for options on dimensions, base plates, colors, and gussets.

See **Part Number section** (page 3) for a full explanation of the Instrument Mounting Stand part number system.

**Base "B": 3/8" thick (carbon steel/aluminum)**  
**Base "D": 5/16" thick (stainless)**



**Single Wall Mount with One-Hole Brackets**



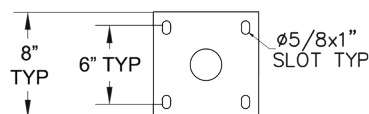
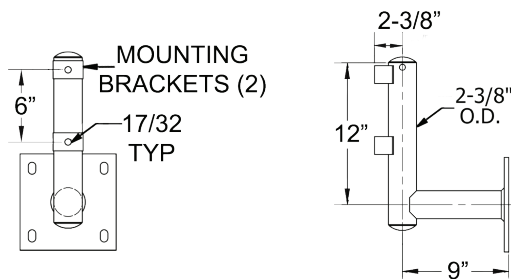
Metal	Finish	Part No.
Carbon Steel	Hot-Dip Galvanized	IMWS09GCNCC0012
	Powder Coat Yellow	IMWS09PCYCC0012
	Powder Coat White	IMWS09PCWCC0012
Aluminum	Natural Finish	IMWS09NANCC0012
304 Stainless Steel	Stainless Steel T-304	IMWS09S4NEC0012
316 Stainless Steel	Stainless Steel T-316	IMWS09S6NEC0012

Illustrations show our standard stands with brackets, which allow for best pricing and availability. Multiple custom specifications are available.

See **Custom Specification Options** section (page 4) for options on dimensions, base plates, colors, and gussets.

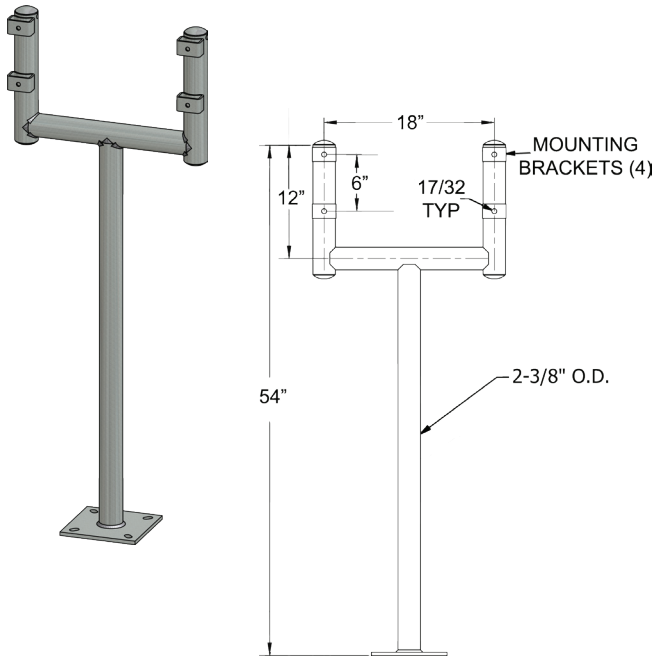
See **Part Number section** (page 3) for a full explanation of the Instrument Mounting Stand part number system.

**Base "C": 3/8" thick (carbon steel/aluminum)**  
**Base "E": 5/16" thick (stainless)**





**Double Floor Mount with One-Hole Brackets**



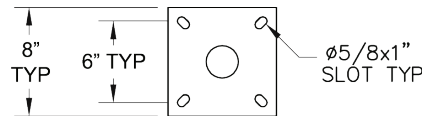
Metal	Finish	Part No.
Carbon Steel	Hot-Dip Galvanized	IMFD54GCNBC1812
	Powder Coat Yellow	IMFD54PCYBC1812
	Powder Coat White	IMFD54PCWBC1812
Aluminum	Natural Finish	IMFD54NANBC1812
304 Stainless Steel	Stainless Steel T-304	IMFD54S4NDC1812
316 Stainless Steel	Stainless Steel T-316	IMFD54S6NDC1812

Illustrations show our standard stands with brackets, which allow for best pricing and availability. Multiple custom specifications are available.

See **Custom Specification Options** section (page 4) for options on dimensions, base plates, colors, and gussets.

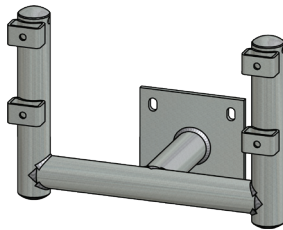
See **Part Number** section (page 3) for a full explanation of the Instrument Mounting Stand part number system.

**Base "B": 3/8" thick (carbon steel/aluminum)**  
**Base "D": 5/16" thick (stainless)**



©2017 James C. White Co., Inc. 0925

**Double Wall Mount with One-Hole Brackets**



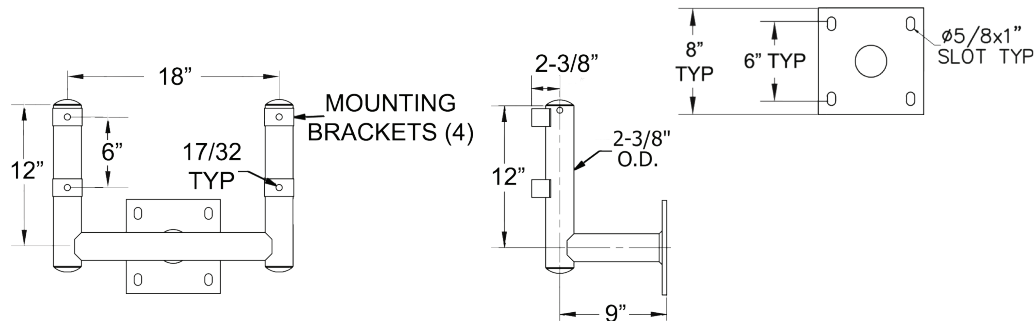
Metal	Finish	Part No.
Carbon Steel	Hot-Dip Galvanized	IMWD09GCNCC1812
	Powder Coat Yellow	IMWD09PCYCC1812
	Powder Coat White	IMWD09PCWCC1812
Aluminum	Natural Finish	IMWD09NANCC1812
304 Stainless Steel	Stainless Steel T-304	IMWD09S4NEC1812
316 Stainless Steel	Stainless Steel T-316	IMWD09S6NEC1812

Illustrations show our standard stands with brackets, which allow for best pricing and availability. Multiple custom specifications are available.

See **Custom Specification Options** section (page 4) for options on dimensions, base plates, colors, and gussets.

See **Part Number** section (page 3) for a full explanation of the Instrument Mounting Stand part number system.

**Base "C": 3/8" thick (carbon steel/aluminum)**  
**Base "E": 5/16" thick (stainless)**

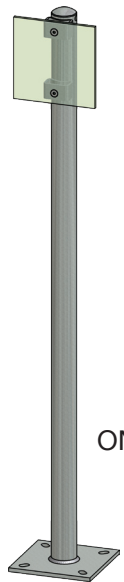




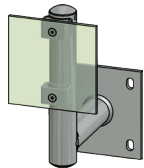
### Design Possibilities for JCWCO Instrument Stands

The Mounting Brackets on our Instrument Stands give you the flexibility to use a wide variety of mounting configurations. Using standard strut, plates, structural bar, etc., the field installation of your instrumentation will be much simpler and faster.

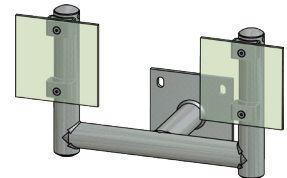
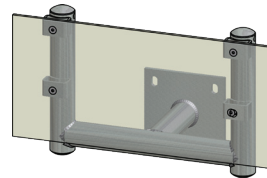
Our stands with Mounting Brackets are typically offered without any hardware or attachments. See the **Supplementary Materials** section (page 15) for information on purchasing various attachments.



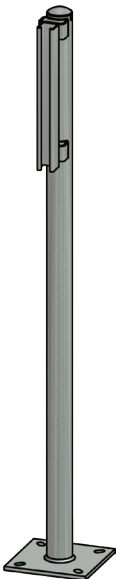
SINGLE PANEL  
ON A SINGLE STAND



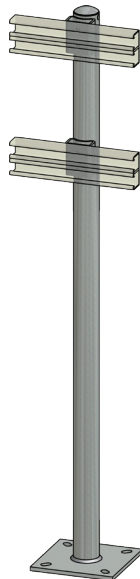
SINGLE PANEL  
ON A DOUBLE STAND



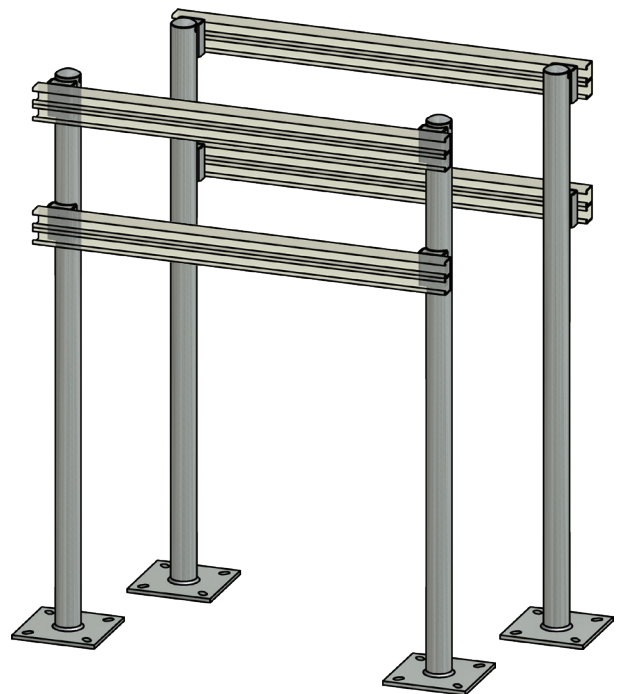
DOUBLE PANEL  
ON A DOUBLE STAND



VERTICAL STRUT  
ON A SINGLE STAND

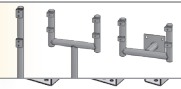


TWO DOUBLE  
STRUTS ON A  
SINGLE STAND



TWO DOUBLE STRUTS  
MOUNTED ACROSS A PAIR OF STANDS

©2017 James C. White Co., Inc. 0925



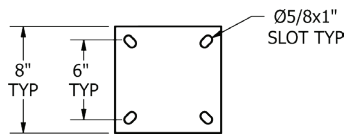
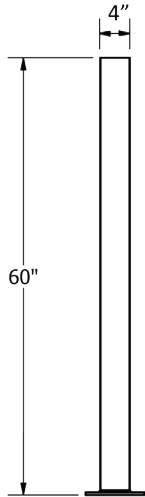
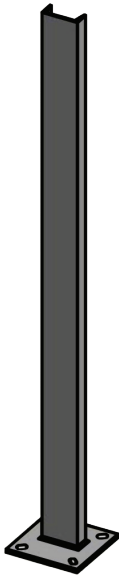
### Channel Floor Mount

Metal	Finish	Part No.
Carbon Steel	Hot-Dip Galvanized	IMC4F60GCNCB

Channel Floor Mount stands are used for many different applications, including mounting of push button controls.

They are manufactured at our factory under JCWCO Quality Control standards. Catalog-standard Channel Floor Mount Stands are manufactured using ASTM-A36 carbon steel C4x5.4 structural channel, welded all the way to a 8" x 8" x 3/8" base plate, and hot-dip galvanized after fabrication. Galvanized coating is inspected and adhesion tested by JCWCO certified inspectors to verify compliance with ASTM-A123.

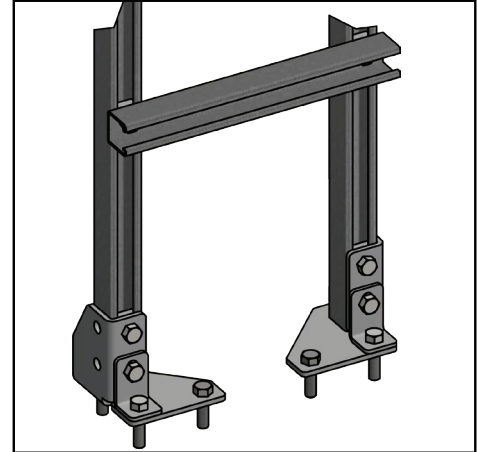
Contact factory for custom specifications including stand height, channel width, base plate size and hole patterns, and powder coat finish/colors.





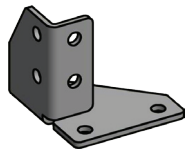
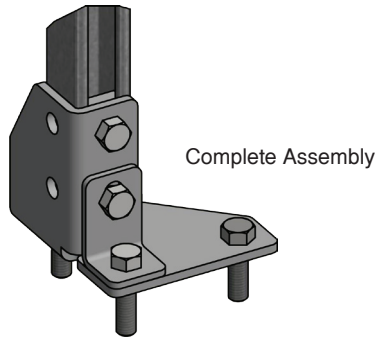
**Strut Stand Bases**

- Our new Strut Stand Bases allow for fast and easy field fabrication of strut stands, saving you time and money.
- No welds
- Pre-cut or field cut standard strut to desired length.
- Fits Unistrut® P1000, P1000T, P1000H3, standard 1-5/8" x 1-5/8" strut or equivalent.
- Available to purchase as individual components or a complete assembly.
- Assembly includes (2) 1/2-13 x 1 1/2" bolts, (2) 1/2" spring nuts, and angle brace.
- Anchor Fasteners and Strut are not included.



**Strut Stand Base  
Left Hand**

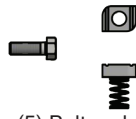
**NEW  
IN 2017**



(1) Stand Base



(4) Angle Brace



(5) Bolt and  
(6) Spring Nut

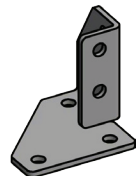
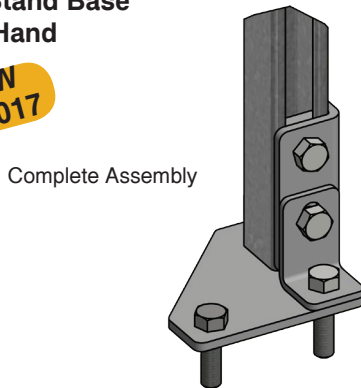
Metal	Complete Assy. Part No.
Hot-Dip Galv. Steel	STBA-GCL-B2878Y
Stainless Steel T-304	-
Stainless Steel T-316	-

**Great for skid building.** Can be purchased as individual components or complete assembly. **For Individual Components, use item numbers at left and see page 14 for associated Part Number.**

Complete assembly includes hardware: (2) 1/2-13 x 1-1/2" bolts and (2) 1/2" Spring Nuts. Anchor Fasteners and Strut sold separately.

**Strut Stand Base  
Right Hand**

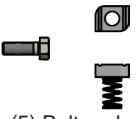
**NEW  
IN 2017**



(2) Stand Base



(4) Angle Brace



(5) Bolt and  
(6) Spring Nut

Metal	Complete Assy. Part No.
Hot-Dip Galv. Steel	STBA-GCR-B2886Y
Stainless Steel T-304	-
Stainless Steel T-316	-

**Great for skid building.** Can be purchased as individual components or complete assembly. **For Individual Components, use item numbers at left and see page 14 for associated Part Number.**

Complete assembly includes hardware: (2) 1/2-13 x 1-1/2" bolts and (2) 1/2" Spring Nuts. Anchor Fasteners and Strut sold separately.

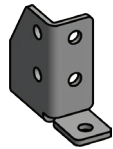
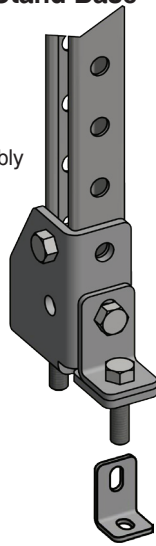
©2017 James C. White Co., Inc. 0925



**Strut Connector & Stand Base**

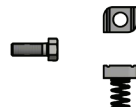
**NEW  
IN 2017**

Complete Assembly



(3) Stand Base

(4) Angle Brace



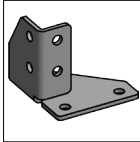

(5) Bolt and  
(6) Spring Nut

Metal	Complete Assy. Part No.
Hot-Dip Galv. Steel	STBA-GC-A5100Y
Stainless Steel T-304	-
Stainless Steel T-316	-

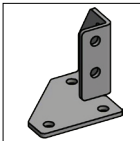

**Great for skid building.** Can be purchased as individual components or complete assembly. **For Individual Components, use item numbers at left and see below for associated Part Number.**

Complete assembly includes hardware: (2) 1/2-13 x 1-1/2" bolts and (2) 1/2" Spring Nuts. Anchor Fasteners and Strut sold separately.

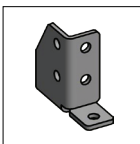

**Strut Stand Bases - Individual Components**

①  Stand Base - LEFT HAND 

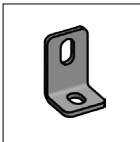

Metal	Part No.
Hot-Dip Galv. Steel	STB-GC-B2877-LH
Stainless Steel T-304	-
Stainless Steel T-316	-

②  Stand Base - RIGHT HAND 

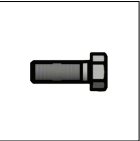
Metal	Part No.
Hot-Dip Galv. Steel	STB-GC-B2885-RH
Stainless Steel T-304	-
Stainless Steel T-316	-

③  Stand Base - STANDARD 

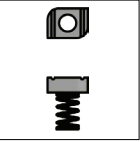
Metal	Part No.
Hot-Dip Galv. Steel	STB-GC-A5099
Stainless Steel T-304	-
Stainless Steel T-316	-

④  Angle Brace 

Metal	Part No.
Hot-Dip Galv. Steel	STBB-GC-A5087
Stainless Steel T-304	-
Stainless Steel T-316	-

⑤  Hex Head Bolt

Metal	Part No.
Zinc-Plated Steel	MBZN-500X1.50

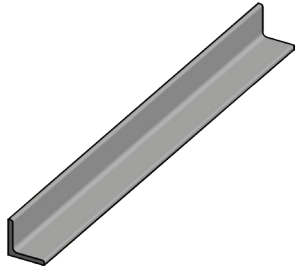
⑥  Strut Nut

Metal	Part No. Strut Nut (w/ Spring)	Part No. Strut Nut (No Spring)
Zinc-Plated Steel	STSN-ZN-500	STN-ZN-500
Stainless Steel T-304	STSN-S4-500	STN-S4-500
Stainless Steel T-316	STSN-S6-500	STN-S6-500



# Supplementary Materials

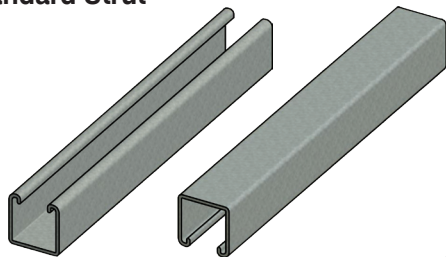
## Framing Angle



Width	Metal	Part No.
2"	A-36 HRS Hot-Dip Galvanized Steel	A2FR25GCU-240
3"	A-36 HRS Hot-Dip Galvanized Steel	A3FR25GCU-240

1/4" thick, 20' length.  
Non-perforated, hot-dip galvanized A-36 HRS structural steel angle for field fabrication.

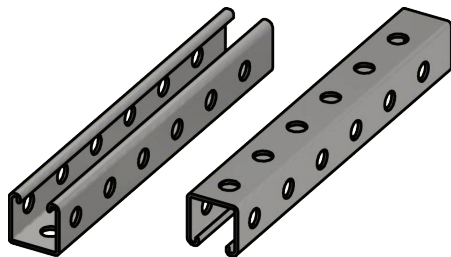
## Standard Strut



Metal	Part No.	Length
Hot-Dip Galv. Steel	ST200-GC	20'
Pre-Galv. Steel	ST200-PG	
Stainless Steel T-304	ST200-S4	10'
Stainless Steel T-316	ST200-S6	

1-5/8" x 1-5/8" x 12ga.  
Standard Strut with no holes.

## Strut with Holes

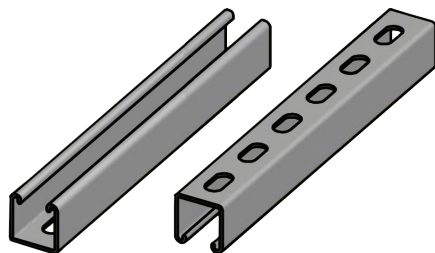


Metal	Part No.	Length
Hot-Dip Galv. Steel	ST200-GC-H3	20'
Pre-Galv. Steel	ST200-PG-H3	

1-5/8" x 1-5/8" x 12ga.  
Standard strut with 9/16" round holes (all sides) on 1-7/8" centers.

Will fit JCWCO Strut Connectors & Strut Bases in 90° orientation without drilling holes. See pages 13-14.

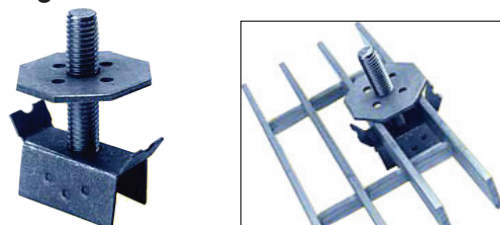
## Strut with Elongated Holes



Metal	Part No.	Length
Hot-Dip Galv. Steel	ST200-GC-EH	20'
Pre-Galv. Steel	ST200-PG-EH	
Stainless Steel T-304	ST200-S4-EH	10'
Stainless Steel T-316	ST200-S6-EH	

1-5/8" x 1-5/8" x 12ga.  
Standard strut with oblong slots (9/16" x 1-1/8") on 2" centers.

## Grating Mounts



Metal	Part No.
Hot-Dip Galv. Steel	IM-GMGC-500X3.0
Stainless Steel T-316	IM-GMS6-500X3.0

1/2" x 3" stud. Withstands up to 1,000 lb. upward pulling force.  
Fastener assembly used as a stable base on which to mount other devices to a grating surface.

©2017 James C. White Co., Inc. 0925